

## Interdisciplinary Summer Undergraduate Research Program

### Pursue your research interests

The Interdisciplinary Summer Undergraduate Research Program is designed to provide students with the freedom to identify a research mentor from among 300+ laboratories. You can pursue summer research in an area you may not have explored yet in your undergraduate training.

### Boost your resume for graduate school

Our summer research program offers you the chance to gain valuable laboratory experience that will enrich your education & increase your chances for graduate school admission

### Get hands-on lab experience

This unique program provides research opportunities in the laboratories of faculty who belong to the graduate programs in Free Radical and Radiation Biology, Human Toxicology, Genetics, Immunology, Molecular & Cellular Biology, and Neuroscience.

### Eligibility

Eligible students must have completed their sophomore or junior year toward a bachelor's degree at an accredited four-year college in the U.S. in the biological or physical sciences by the summer of the program.

### Program features

**Dates:** 10 Weeks from May 21 to July 27, 2018

**Stipend:** \$3,750

**Housing:** University of Iowa Residence Hall

**Travel Allowance:** up to \$500

**Career Development Seminar**

**Weekly Research Seminars**

**Social Events**

**Summer Undergraduate Research Conference**

## About the University of Iowa

### Enrollment

Over 33,000 students, including 7,500 graduate and professional students.

### Research Funding

The University of Iowa ranks 30th among all public universities in federal research and development expenditures in the US. In 2015 the University received \$443 million in external funding for research.

### Faculty

Approximately 1,600 tenured & tenure-track faculty.



### Community

With a population of 100,000, the Iowa City metropolitan area provides the cultural and recreational advantages of a major city in the setting of a University town.

### Location

The University of Iowa is located in Iowa City, the hub of a number of large cities; 2 hours by car from Des Moines, 3.5 hours from Chicago, and 4-5 hours from Milwaukee, Minneapolis, Omaha, St. Louis, and Kansas City.

*For more Remarkable Facts about the University of Iowa visit <http://www.uiowa.edu>*

#### Interdisciplinary Graduate Program in Molecular & Cellular Biology

The University of Iowa  
357 Medical Research Center  
Iowa City, IA 52242-1182

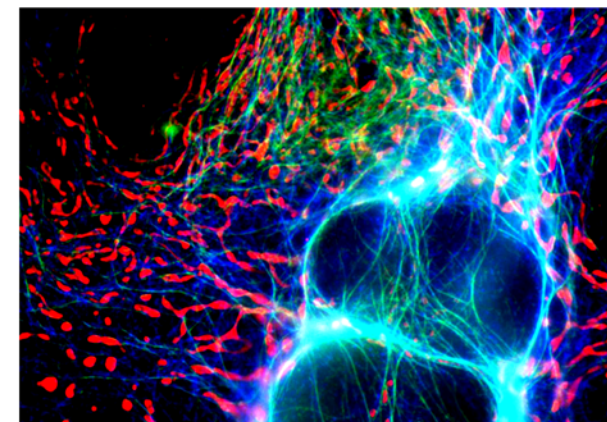
Phone: 319-335-7748

E-mail: [molcell-biology@uiowa.edu](mailto:molcell-biology@uiowa.edu)

Website: <http://medicine.uiowa.edu/mcb>



## Interdisciplinary Graduate Program in Molecular & Cellular Biology



### Research without boundaries

Our interdisciplinary graduate program crosses traditional departmental boundaries to allow students the unique opportunity to pursue their research interests from among 85+ laboratories across 15+ science and medical departments

For more information: [medicine.uiowa.edu/mcb](http://medicine.uiowa.edu/mcb)

# ●●● | Molecular & Cellular Biology

The Interdisciplinary Ph.D. Program in Molecular & Cellular Biology at The University of Iowa is an inter-departmental program that cuts across traditional boundaries of the basic science departments. Currently, you may select from among 85+ research faculty members, who can offer exciting opportunities for your dissertation research. Our program reflects the diverse array of research interests that comprise the investigative activities of our faculty mentors.



Among your options, you will see strengths in the fields of cell growth and differentiation, cell organization and trafficking, gene expression and regulation, molecular medicine, cancer biology, signal transduction mechanisms, stem cells, structural biology and function, and virology. These exceptional opportunities will provide you with a rich environment for your professional growth and development.

## Departments Represented

- |  |  |
|--|--|
| • <b>Anatomy &amp; Cell Biology</b>            | • <b>Neurology</b>                           |
| • <b>Biochemistry</b>                          | • <b>Obstetrics &amp; Gynecology</b>         |
| • <b>Biology</b>                               | • <b>Ophthalmology &amp; Visual Sciences</b> |
| • <b>Chemistry</b>                             | • <b>Otolaryngology</b>                      |
| • <b>Internal Medicine</b>                     | • <b>Pathology</b>                           |
| • <b>Microbiology</b>                          | • <b>Pediatrics</b>                          |
| • <b>Molecular Physiology &amp; Biophysics</b> | • <b>Pharmacology</b>                        |
|  | • <b>Radiation Oncology</b>                  |

## Flexible Curriculum

A combination of core and elective courses together with hands-on laboratory experience provide a strong base for Ph.D. thesis research.

## Teaching Experience

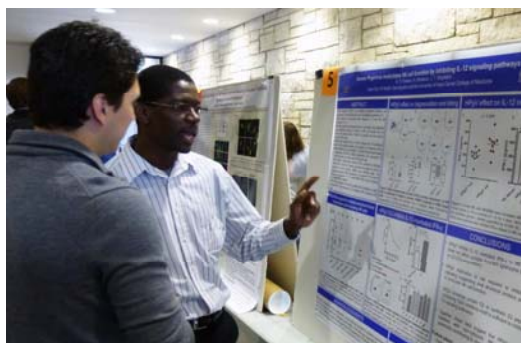
Students have an opportunity to teach in small group and classroom settings. Workshops promote communication and presentation skills.

## Full Financial Support

All qualified and accepted applicants will receive tuition scholarships, a yearly stipend, and a health insurance allowance.

## State-of-the-Art Facilities

The University of Iowa provides modern laboratory, classroom, and seminar facilities.



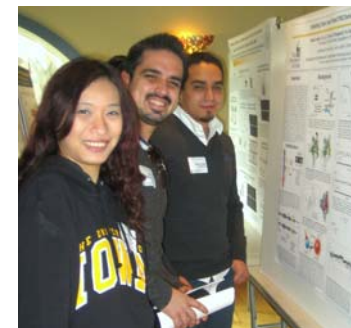
## Interdisciplinary Graduate Program in Molecular & Cellular Biology

The University of Iowa  
357 Medical Research Center  
Iowa City, IA 52242-1182

Phone: 319-335-7748

E-mail: [molcell-biology@uiowa.edu](mailto:molcell-biology@uiowa.edu)

Website: [medicine.uiowa.edu/mcb](http://medicine.uiowa.edu/mcb)



## How to Apply

Applicants to the Interdisciplinary Graduate Program in Molecular & Cellular Biology should have an undergraduate degree in a biology related field. The undergraduate curriculum should include basic biology and chemistry; course content that covers basic genetics, cell biology, and biochemistry is also very helpful. Deficiencies can be made up during the first year as a graduate student.

Students must apply to the **Biomedical Science Program (BSP)** <http://www.medicine.uiowa.edu/biomed/>. This umbrella program provides a unified admissions mechanism and acts as a common portal by which students are admitted directly to one of eight subprograms at the University of Iowa, including the Molecular & Cellular Biology Graduate Program. Submit the online application to UI Graduate Admissions at [grad.admissions.uiowa.edu/apply](http://grad.admissions.uiowa.edu/apply). For best consideration, please submit all application materials by December 1, 2017.

Selected candidates will be invited to campus for an interview at the Program's expense. The application fee will be reimbursed by the CCOM **Office of Graduate and Postdoctoral Studies** if the applicant receives an interview invitation and completes the interview.

The University of Iowa prohibits discrimination in employment, educational programs, and activities on the basis of race, national origin, color, creed, religion, sex, age, disability, veteran status, sexual orientation, gender identity, or associational preference. The University also affirms its commitment to providing equal opportunities and equal access to University facilities. For additional information contact the Office of Equal Opportunity and Diversity, (319) 335-0705.